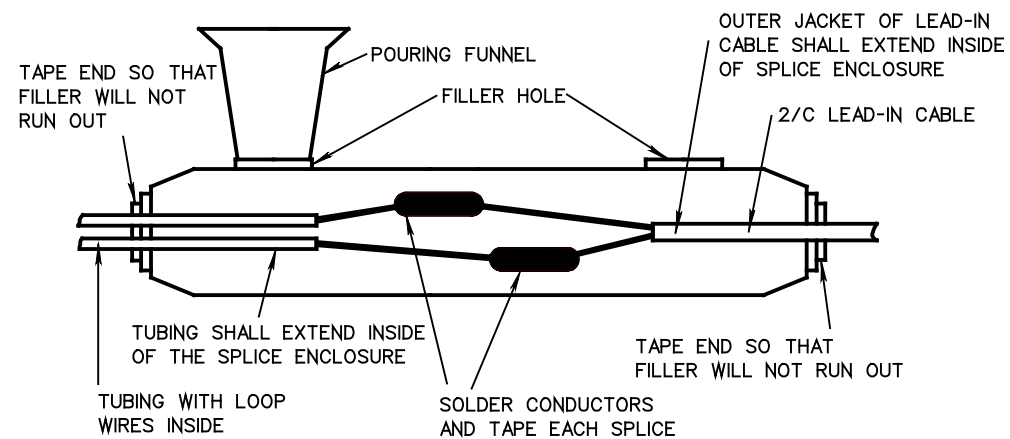
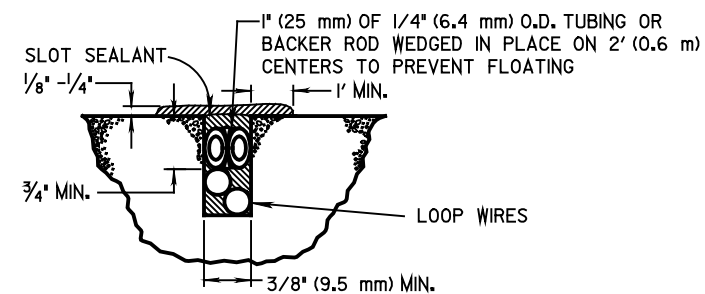


TYPICAL DETECTOR LOOP DETAILS



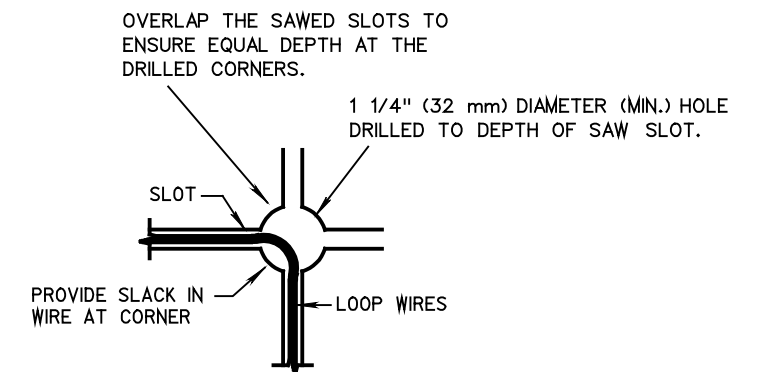
1. LOOP DETECTOR WIRE TO LEAD-IN CABLE SPLICES WITHIN THE ENCAPSULATED SPLICE ENCLOSURE SHALL BE SOLDERED.
2. IF A PULLBOX IS NOT SPECIFIED IN THE PLANS, THE WATERPROOF SPLICE ENCLOSURE SHALL BE LOCATED IN THE FIRST ENTERED POLE OR PEDESTAL, EXCEPT IF THE CONTROLLER CABINET IS MOUNTED ON THAT POLE OR PEDESTAL, IN WHICH CASE THE LOOP WIRES SHALL BE ROUTED DIRECTLY INTO THE CABINET.
3. VISIBLE AIR BUBBLES (VOIDS) OF 1/4" (6 mm) OR GREATER MAY BE CAUSE FOR REJECTION OF THE SPLICE.

SPLICE ENCLOSURE DETAIL



1. LOOP DETECTOR WIRE IN TUBING SHALL BE AS SPECIFIED IN ODOT CMS TABLE 732.19-1.
2. LOOP DETECTOR SEALANT SHALL BE A PREQUALIFIED PRODUCT IN ACCORDANCE WITH SUPPLEMENT 1048.
3. SAW SLOTS AND PROBE HOLES SHALL BE THOROUGHLY CLEANED AND DRIED PRIOR TO INSTALLATION OF SEALANT.
4. WIRE INSTALLATIONS IN NEW ASPHALT SHALL BE SAWED AND EMBEDDED WITH SEALANT IN A SUB-SURFACE COURSE WITH SUBSEQUENT COVERING BY THE SURFACE COURSE. THE LAYOUT OF THESE LOOPS SHALL BE COORDINATED WITH THE CITY TRAFFIC ENGINEER OR HIS AUTHORIZED REPRESENTATIVE.

SLOT DETAIL



DETAIL B