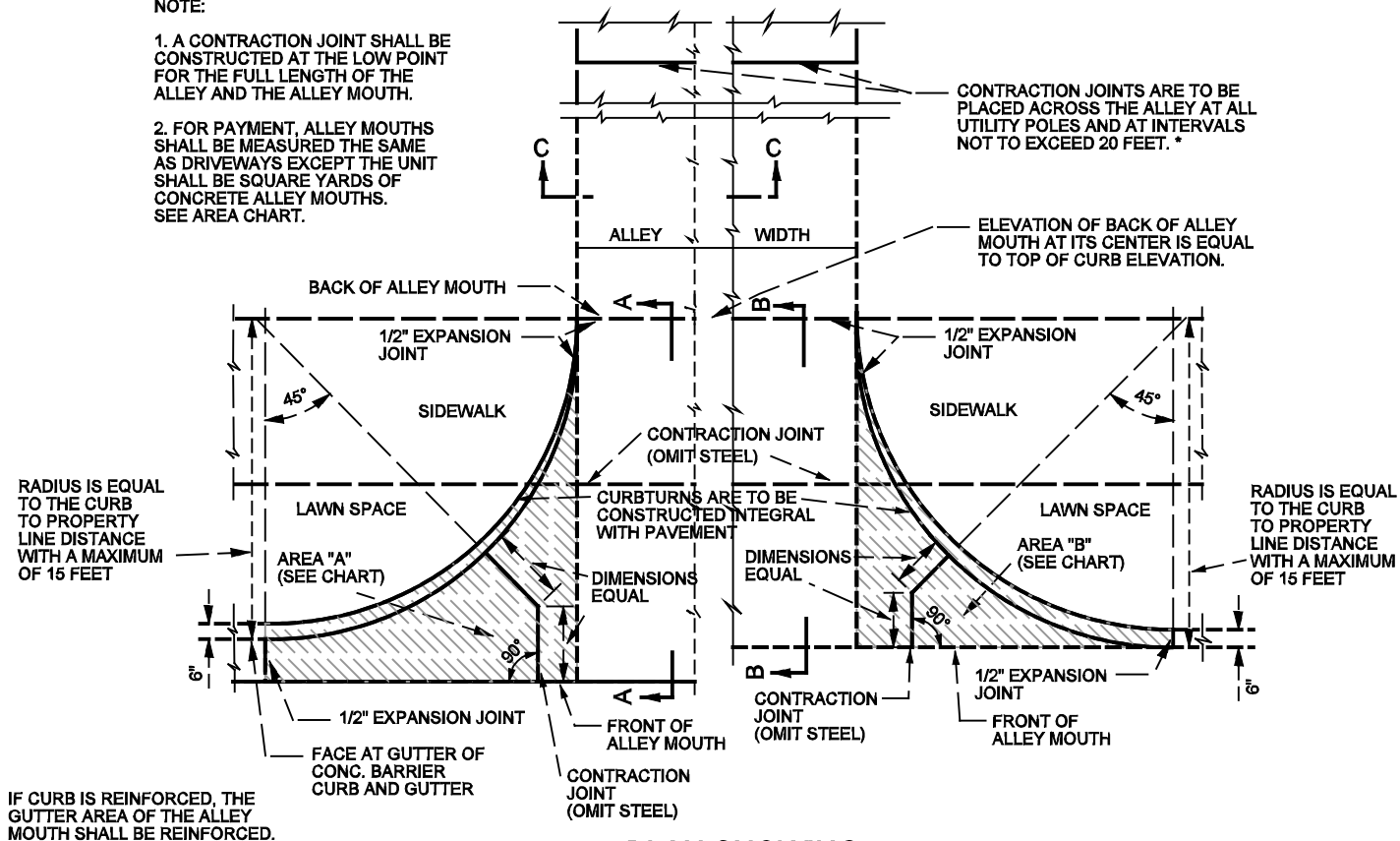


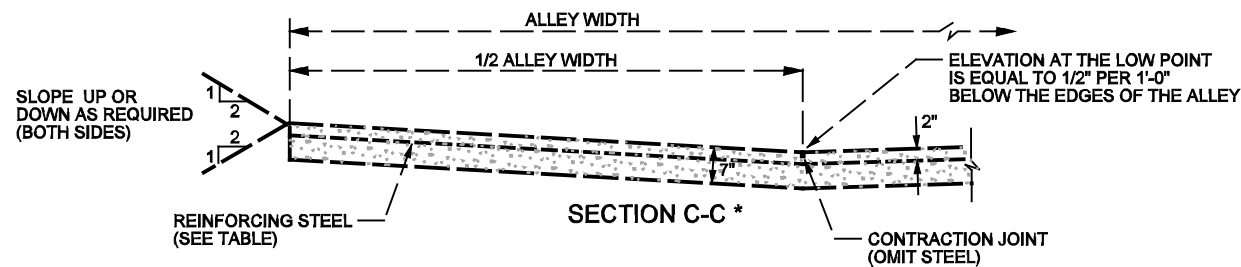
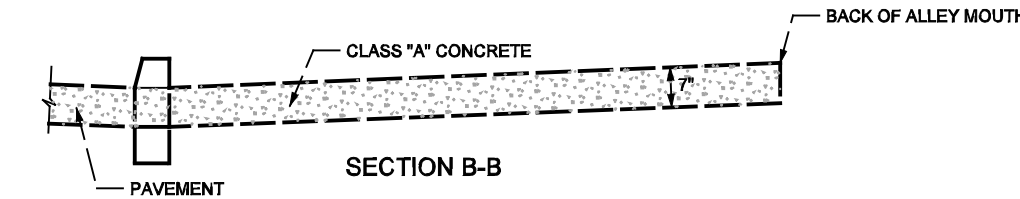
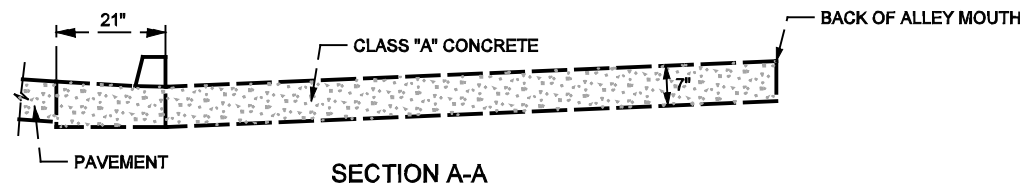
NOTE:

1. A CONTRACTION JOINT SHALL BE CONSTRUCTED AT THE LOW POINT FOR THE FULL LENGTH OF THE ALLEY AND THE ALLEY MOUTH.
2. FOR PAYMENT, ALLEY MOUTHS SHALL BE MEASURED THE SAME AS DRIVEWAYS EXCEPT THE UNIT SHALL BE SQUARE YARDS OF CONCRETE ALLEY MOUTHS. SEE AREA CHART.



IF CURB IS REINFORCED, THE GUTTER AREA OF THE ALLEY MOUTH SHALL BE REINFORCED.

PLAN SHOWING ALLEY MOUTH AND PAVEMENT



CONCRETE ALLEY MOUTH AND PAVEMENT

NOTE:

1. AREA "A" OR AREA "B", INCLUDING THE CIRCULAR PORTION OF THE CURB, SHALL BE INCLUDED IN THE NUMBER OF SQUARE FEET TO BE PAID FOR AS DRIVEWAY.
2. A CONTRACTION JOINT SHALL BE CONSTRUCTED IN THE CENTER OF AN ALLEY MOUTH FOR ITS FULL LENGTH.

* ALTERNATE ALLEY CONSTRUCTION SHALL BE ASPHALT CONCRETE AS SPECIFIED FOR CLASS 3 ROADWAY PAVEMENT.

RADIUS IN FEET	AREA CHART	
	AREA IN SQ. FT. OF ALLEY "TURNS" (ONE CORNER ONLY) SEE DETAIL	
	CONC. COMB. CURB & GUTTER AREA "A"	CONC. CURB AREA "B"
3.5	7.18	3.43
4.0	8.75	4.38
4.5	10.43	5.43
5.0	12.22	6.60
5.5	14.12	7.87
6.0	16.12	9.24
6.5	18.23	10.73
7.0	20.44	12.32
7.5	22.77	14.02
8.0	25.20	15.82
8.5	27.73	17.73
9.0	30.38	19.75
9.5	33.13	21.88
10.0	35.99	24.12
10.5	38.96	26.46
11.0	42.03	28.91
11.5	45.22	31.47
12.0	48.51	34.13
12.5	51.90	36.90
13.0	55.41	39.78
13.5	59.02	42.77
14.0	62.74	45.86
14.5	66.56	49.06
15.0	70.49	52.37