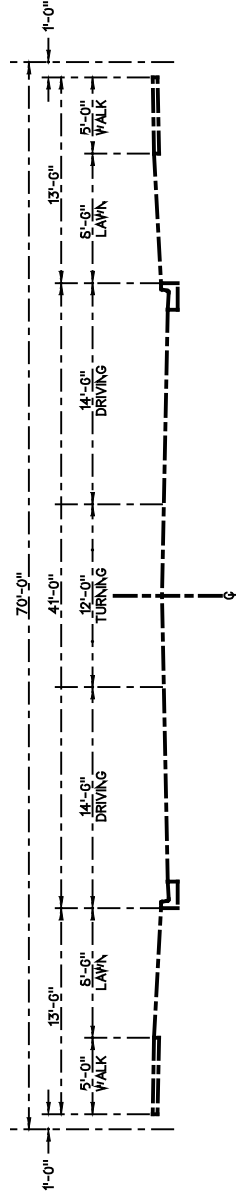
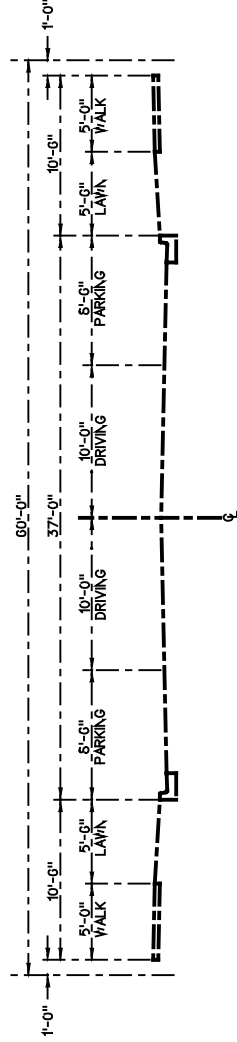


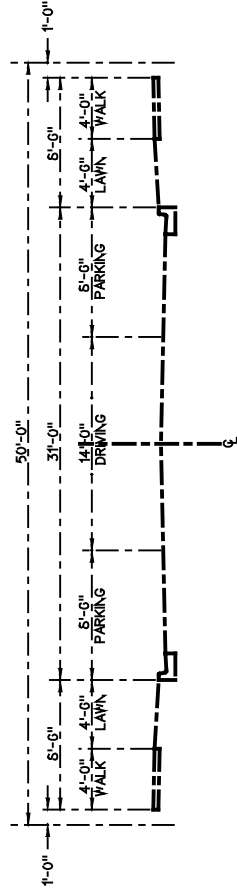
CLASS 1 - 81' THOROUGHFARE



CLASS 2 - 70' ARTERIAL



CLASS 3 - 60' COLLECTOR



CLASS 4 - 50' RESIDENTIAL

NOTES

WITH PERMISSION OF THE PLAN BOARD AT THE TIME OF PRELIMINARY APPROVAL, THE DEVELOPER MAY DEDICATE AN ADDITIONAL TEN FOOT OF RIGHT-OF-WAY FOR CONSTRUCTION OF UTILITIES IN THE LAWN AREA. PROVIDED THE TEN FEET IS DIVIDED EQUALLY FOR BOTH SIDES OF THE STREET, THE SETBACK LINE DISTANCE MAY BE REDUCED BY FIVE FEET. IN NO CASE, HOWEVER, WILL THE SETBACK LINE DISTANCE BE LESS THAN TWENTY FIVE FEET. IF THE EXTRA TEN FEET IS DEDICATED FOR STREET, THE LOT SIZE ALSO MAY BE REDUCED BY FIVE FEET ON EACH SIDE OF THE STREET. THE STREET CLASS FOR CONSTRUCTION SPECIFICATIONS WILL BE DETERMINED BY THE WIDTH FROM BACK OF CURB TO BACK OF CURB.

CLASS	MINIMUM RADIUS	MINIMUM GRADE	MAXIMUM GRADE	SUPER-ELEV. ON CURVES
4	200' ON CL	0.50%	10.0%	NONE
VERTICAL CURVES - 25' OF LENGTH PER 1" CHANGE IN GRADE				
SEE DESIGN CRITERIA SECTIONS 300.03 & 300.04 FOR CLASS 1, 2 & 3				